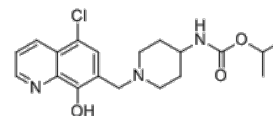


Product Name : ML418
Cat. No. : PC-60576
CAS No. : 1928763-08-9
Molecular Formula : C₁₉H₂₄ClN₃O₃
Molecular Weight : 377.87
Target : Potassium Channel
Solubility : 10 mM in DMSO



Biological Activity

ML418 (ML-418) is the first potent, selective, CNS penetrating inward rectifier potassium channel **Kir7.1 (KCNJ13)** inhibitor with IC₅₀ of 0.31 μM.

ML418 displays >17-fold selective over Kir1.1, Kir2.1, Kir2.2, Kir2.3, Kir3.1/3.2, and Kir4.1 except for Kir6.2/SUR1 (equally potent).

ML418 possesses a DMPK profile suitable for both in vitro and in vivo studies aimed at modulating both peripheral and central Kir7.1 potassium channels.

References

Swale DR, et al. *ACS Chem Neurosci*. 2016 Jul 20;7(7):1013-23.

Caution: Product has not been fully validated for medical applications. Lab Use Only!

E-mail: tech@probechem.com